

Fantom™

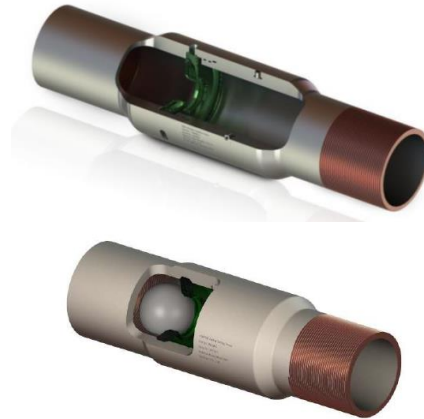
Completion accessories

Ported tools

- Run as part of tubing String
- Activate remotely using a ball
- No intervention & Fullbore tubing

Tubing Devices

- Run as part of tubing or casing string
- Activate remotely using a ball or pressure cycles
- No intervention & fullbore tubing



Applications:

- Set packers
- Test tubing
- Well Barrier
- Isolate setting Ports
- Sleeves
- Annular Isolation Collar

Fantom Ported Tools

- Open to close sleeve (OTC), Close to Open sleeve (CTO), Annular Isolation Collar (AIC) «Technical Data sheet»

Fantom Tubing Device

- Fantom PSD «Technical data sheet»

Simple & Robust design – Low cost – Intervention less – Full Bore ID – Eliminate TCP perforating – V3 and VO barrier qualified
 Estimate value creation from 10 to 24 to 48 hours rig time

- 1) Operation Optimization
Substantial reduction in rig time due to intervention less.
- 2) Reservoir Performance
N/A
- 3) Well Integrity assurance.
N/A

Substantial reduction in rig time due to intervention less. Value creation depends on number of stages. Rig time saving could therefore be from a few hours to 48 hours